

MTCB Playground

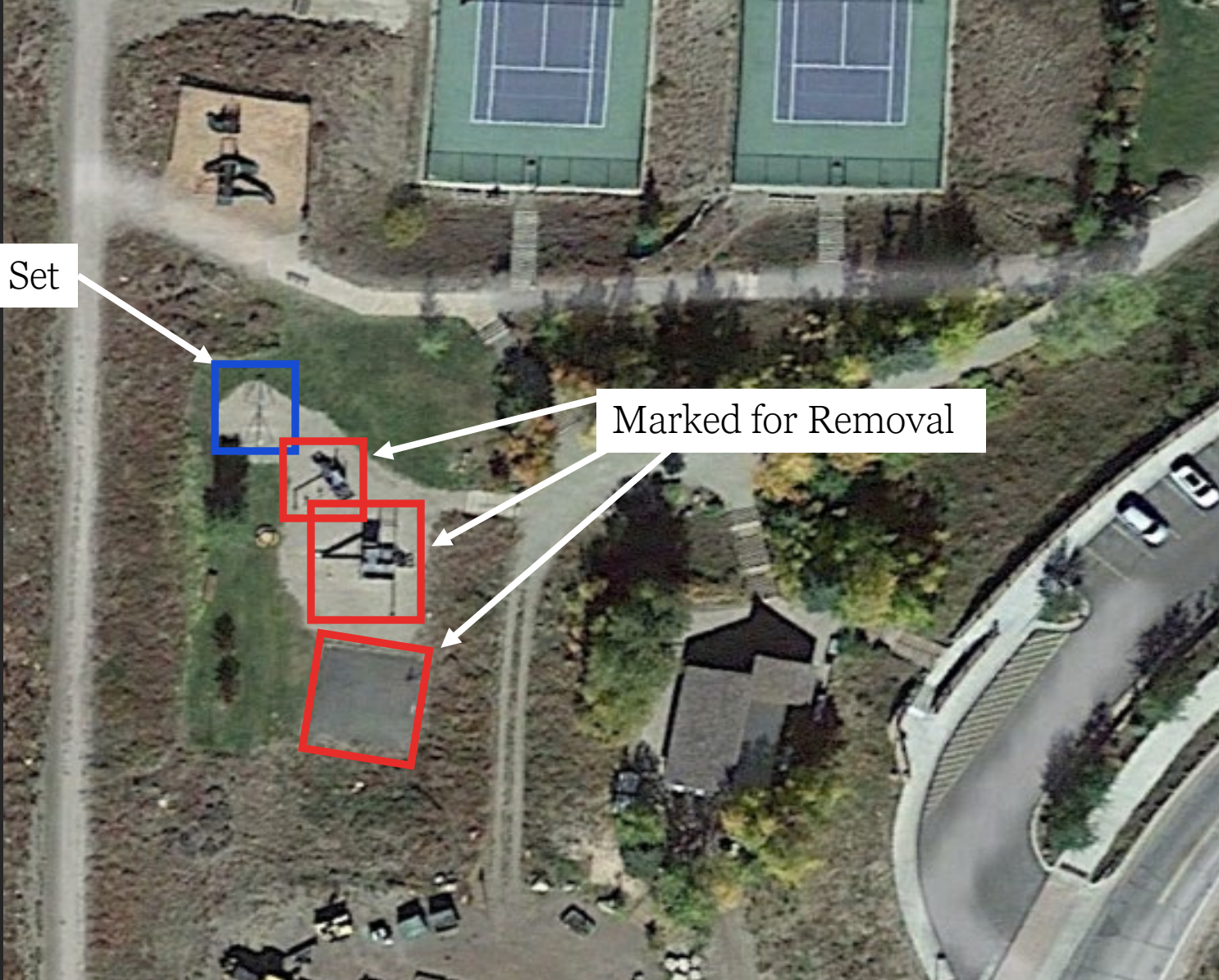
TED SCHESKE PARK

Current underutilized play structures



Keeping Swing Set

Marked for Removal

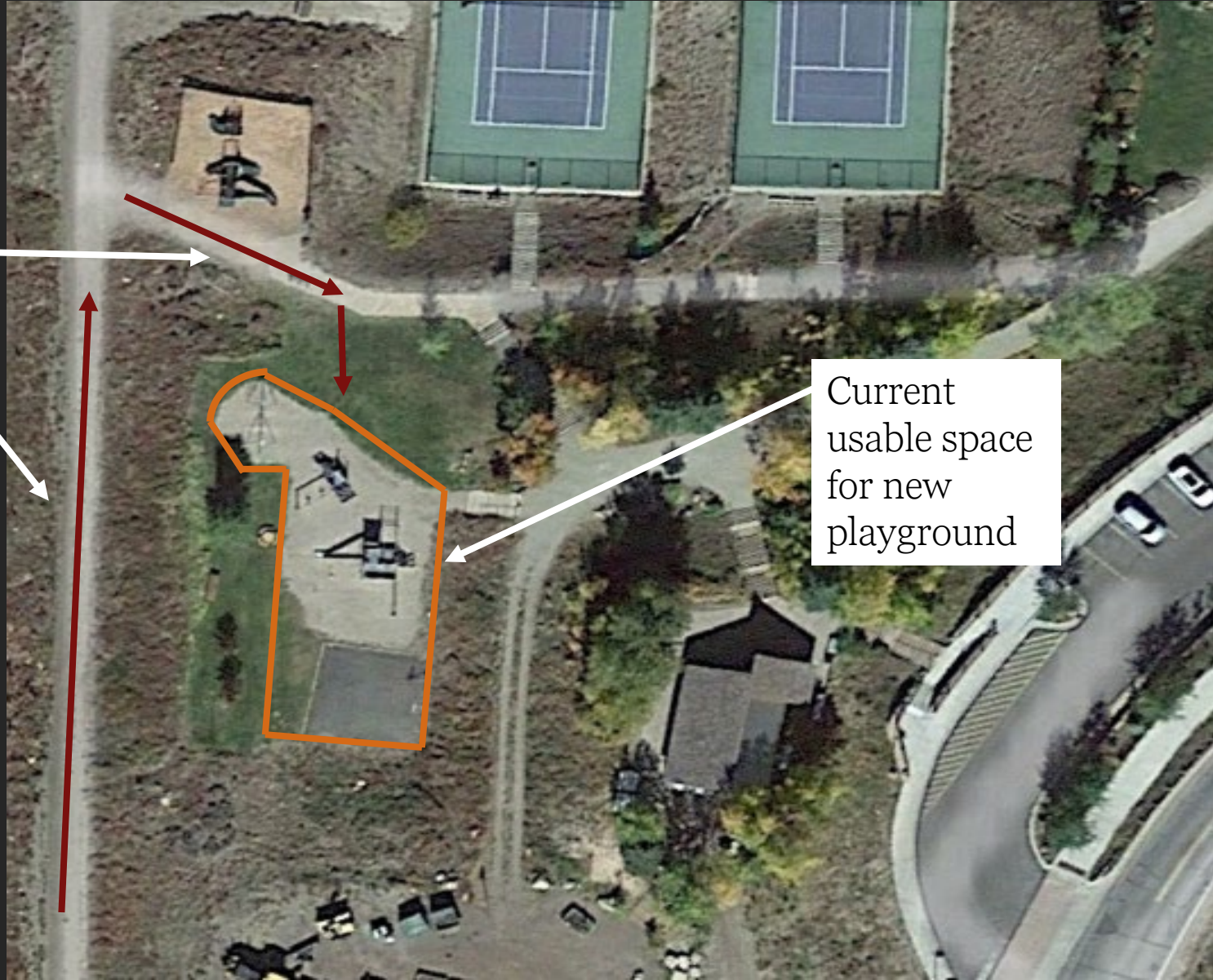


Keep swing set

Current plan
for extending
the playground

Removal of
basketball
courts and old
playground
equipment
(Done by
Town staff)

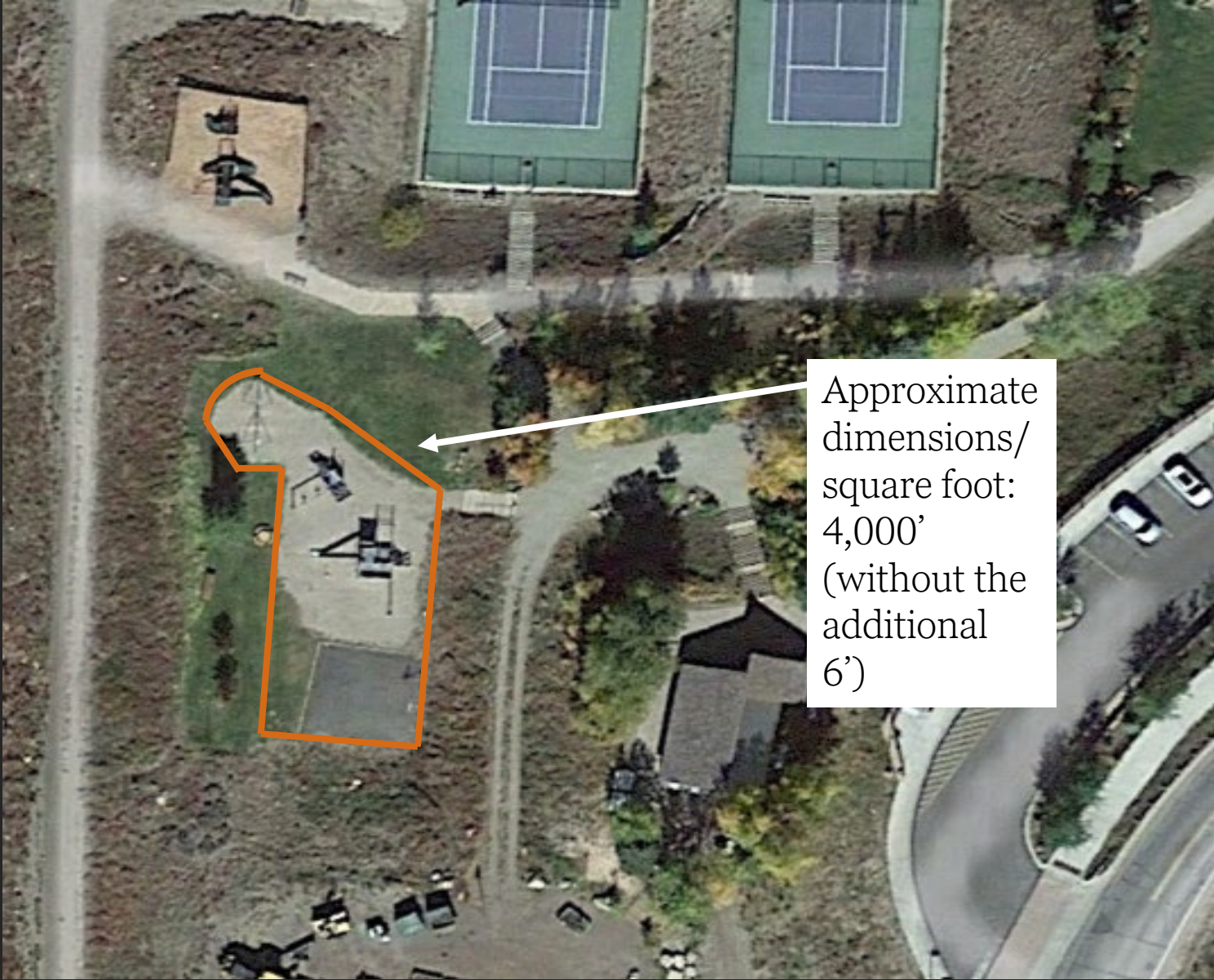
Only accessible road to truck in material (Dirt Road and slightly steep grade)



Current usable space for new playground



Ability to increase size of safe fall area to the North by approximately 6'.



Approximate dimensions/
square foot:
4,000'
(without the
additional
6')

Approx: 25'
(Measured in a straight line
across arch)

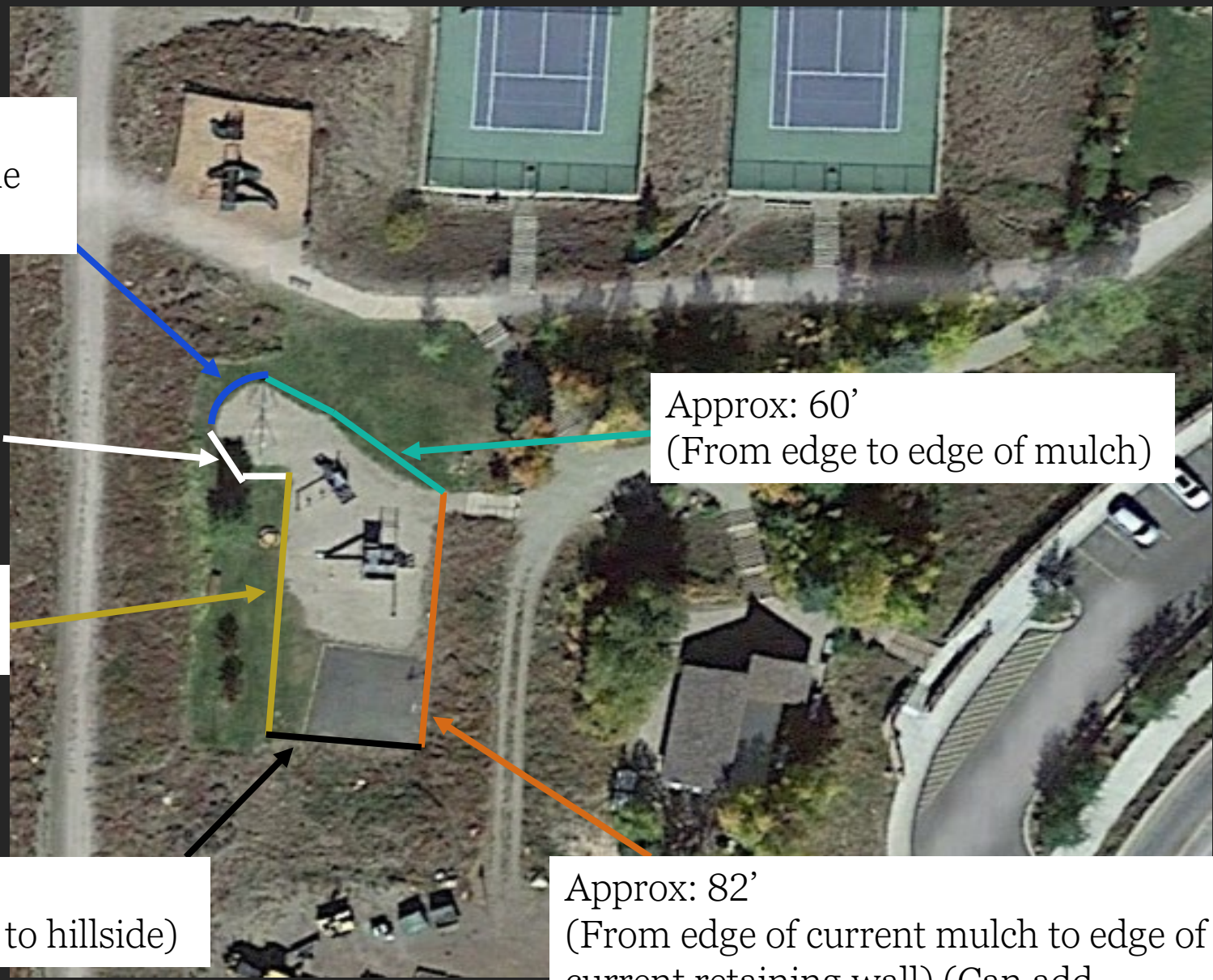
Approx: 20'
(Measured in a straight line)

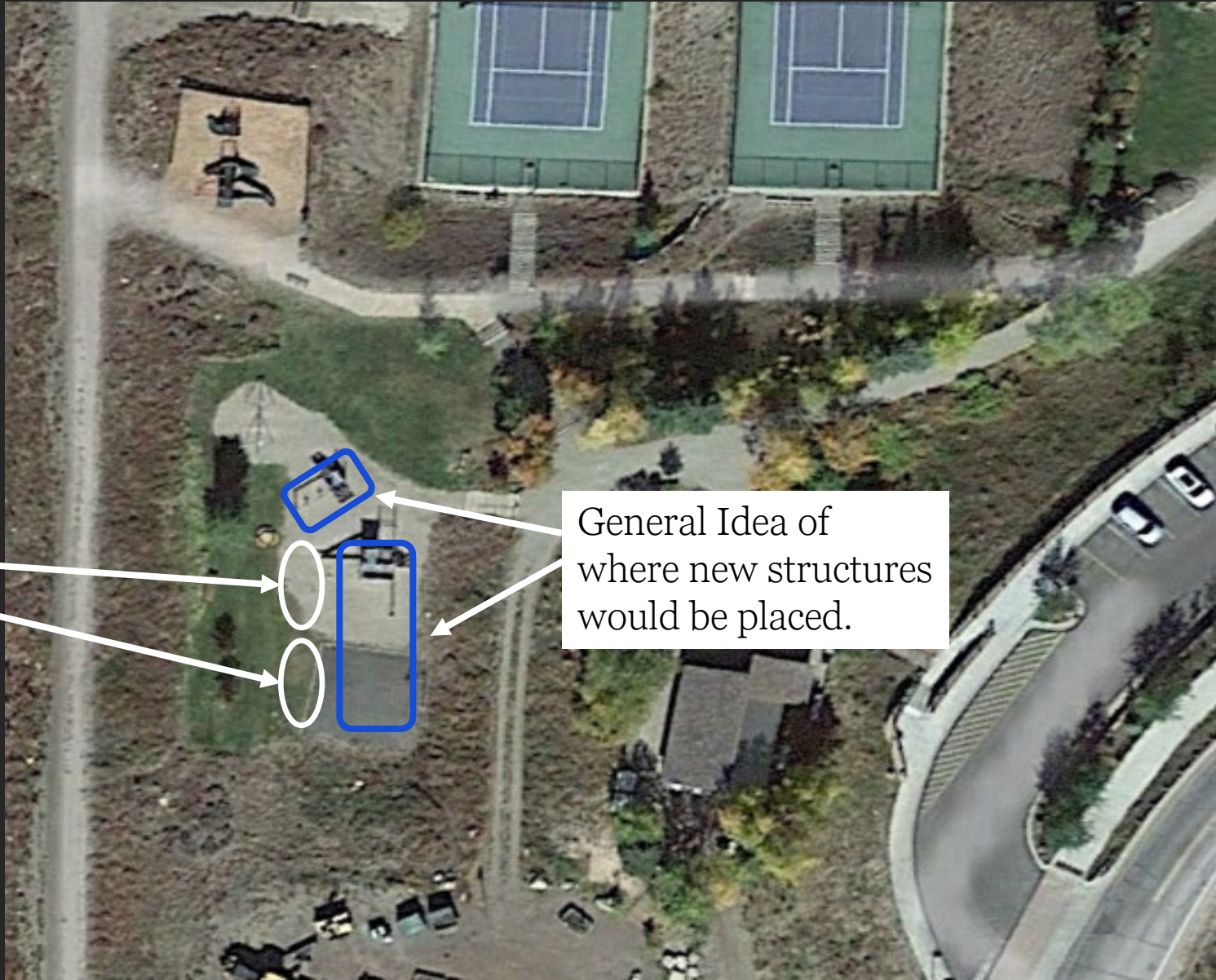
Approx: 60'
(From edge to edge of mulch)

Approx: 82'
(From mulch to retaining wall)

Approx: 40'
(From retaining wall to hillside)

Approx: 82'
(From edge of current mulch to edge of
current retaining wall) (Can add
additional 6' (see slide 6))





Option to add additional small play structure if space allows.

General Idea of where new structures would be placed.



















Primary Needs of play structure/area

- Accessibility play structure

This is the only playground in the town of Mt. Crested Butte, so utilization of a small space is key.

- New swing set for children/parents

Planning to keep current swing set on West side of playground.

- *New swing set should have either bucket seats or child and parent seats (preferred).*
-